



Our Mission

To empower and serve people in need of specialized supports by providing innovative services that improve their ability to live fulfilling lives in the community.

Delaware Valley Region

500 Office Center Drive, Suite 100
Fort Washington, PA 19034-3234
215.540.2150 (phone)
215.540.2165 (fax)

Schuylkill Region

340 S. Liberty Street
Orwigsburg, PA 17861-2127
570.366.1154 (phone)
570.366.7711 (fax)

Lehigh Valley Region

3975 Township Line Road
Bethlehem, PA 18020-4200
610.866.6667 (phone)
610.866.2341 (fax)

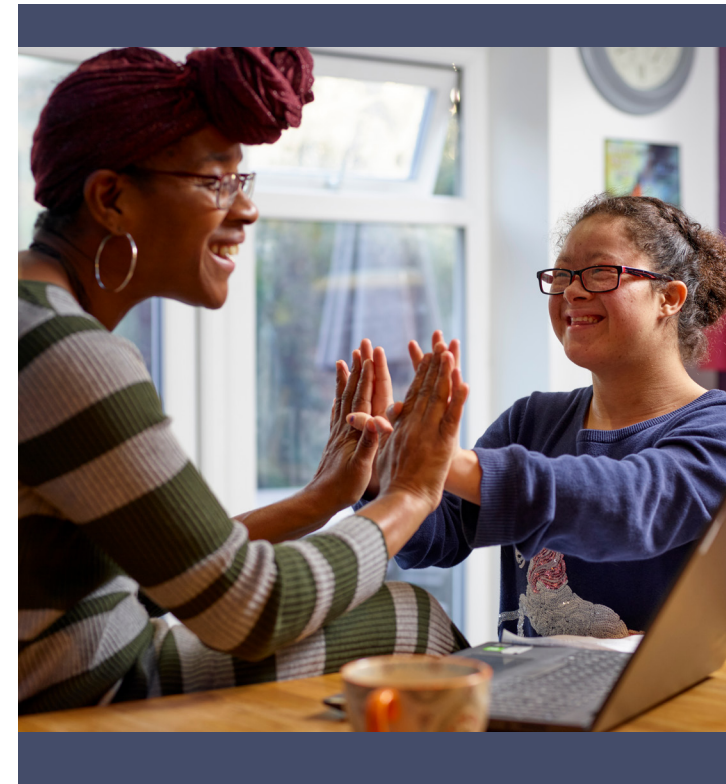
www.accessservices.org

Access Services is an Equal
Opportunity Care Provider
and Employer.



In-Home Supports

Quality Living Starts with
the Basics



What do we do?

Our In-Home Supports program has been helping families since the early 1990s. We provide training, ongoing support and equip Direct Support Professionals (DSPs) to provide 1 on 1 care to support adults and children with intellectual disabilities in their homes and in the community.

Our DSPs help the individuals we serve set personal goals and learn the skills of day-to-day living. In doing so, we seek to improve each person's overall quality of life and support the entire family.

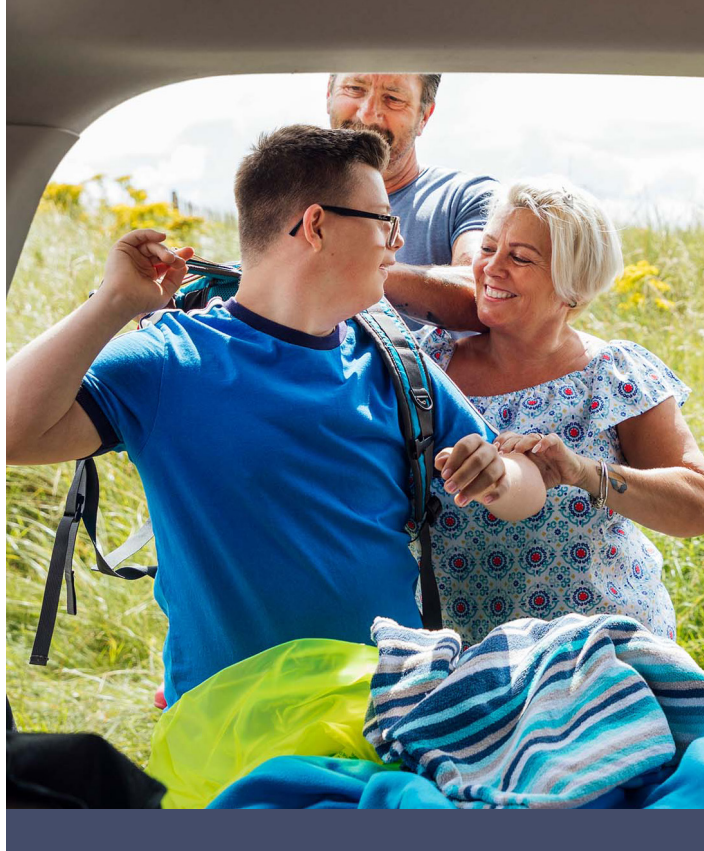
Ultimately, our In-Home Support program is intended to encourage personal growth and teach each individual to become active members of their communities.

Who are we?

Our In-Home Support DSPs are dedicated to the individuals we serve and exemplify the heart of what it means to truly care for others.

Many of our DSPs have been with our program for a long time and have built meaningful relationships with the individuals they serve.

It can be difficult to find quality help for your loved one who needs support. We can match you with a qualified DSP to help your loved one reach their goals.



What do we help individuals do?

- Set and meet personal goals.
- Become contributing members of their communities.
- Foster independence and encourage personal growth.
- Manage daily care routines.

How do you join?

Individuals are referred to the In-Home Supports program through the Office of Developmental Programs in your county. If you are interested in In-Home Supports, speak to your appointed Supports Coordinator about becoming involved. In-Home Supports is funded through the Home and Community Based Services Waiver Program.

Contact us based on your county:

Berks, Carbon, Lehigh, Monroe, Northampton, Pike and Schuylkill Counties:

267-516-0554

CLopez@accessservices.org

Bucks, Chester, Delaware, and Montgomery Counties:

215-450-2196

JCichocki@accessservices.org