



Our Mission:

To empower and serve people in need of specialized supports by providing innovative services that improve their ability to live fulfilling lives in the community.

Main Office

500 Office Center Drive, Suite 100
Fort Washington, PA 19034-3234
215.540.2150 (phone)
215.540.2164 (fax)

Schuylkill/Carbon

340 South Liberty Street
Orwigsburg, PA 17961-2127
570.366.1154 (phone)
800.200.7701 (toll-free)
570.366.7711 (fax)
570.366.5096 (Wellness Center)

Lehigh Valley

1510 Valley Center Parkway, Suite 130
Bethlehem, PA 18017-2267
610.866.6667 (phone)
610.866.2341 (fax)

www.accessservices.org

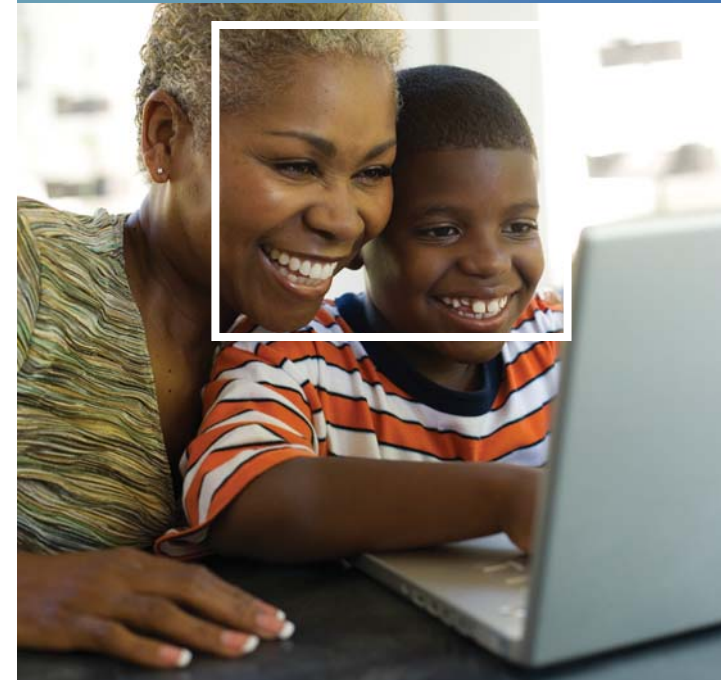


**ACCESS
SERVICES**

Creating better ways to serve
people with special needs

Behavioral Health Rehabilitation Services

Bringing therapy to you.



**ACCESS
SERVICES**

Creating better ways to serve
people with special needs

Child-centered therapy in the community.

Behavioral Health Rehabilitation Services is an innovative program that provides therapeutic interventions for children under the age of 21 who are experiencing emotional or behavioral problems.

The program employs an innovative child-centered philosophy where services and supports are “wrapped around” the specific needs of care recipients in their homes, schools and communities.

By working in the community as opposed to an office or health facility, treatment team members are able to observe real challenges as they occur and promote successful participation in family and community life.

In each case, the Behavioral Health Rehabilitation Services Team may include:

A **Case Manager** who provides support, coordinates services for the family and assembles the therapeutic team.

A **Behavioral Specialist Consultant (BSC)** who utilizes their skills in behavioral management.

A **Mobile Therapist (MT)** who utilizes a strengths-based approach to counseling that is both child related and family focused.

A **Therapeutic Support Staff (TSS)** that provides one-on-one behavioral interventions with the child/adolescent while supporting the family.



Goals of Behavioral Health Rehabilitation Services include:

- Maintaining children and teenagers in their own communities and encouraging participation.
- Focusing on personal strengths in plan formation and intervention.
- Utilizing a variety of community support systems.
- Encouraging “teamwork” so that the child, parents and treatment team are working together.

Eligibility.

To be eligible for the program, care recipients must be under the age of 21. They must also have a MH/MR diagnosis, be eligible for the receipt of medical assistance, and undergo a psychological evaluation, conducted by a psychiatrist or licensed psychologist, recommending the medical necessity for Behavioral Health Rehabilitation Services.

For more information on Behavioral Health Rehabilitation Services or other Access Services programs, visit www.accessservices.org